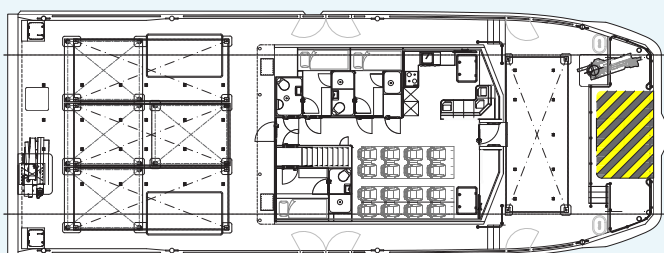
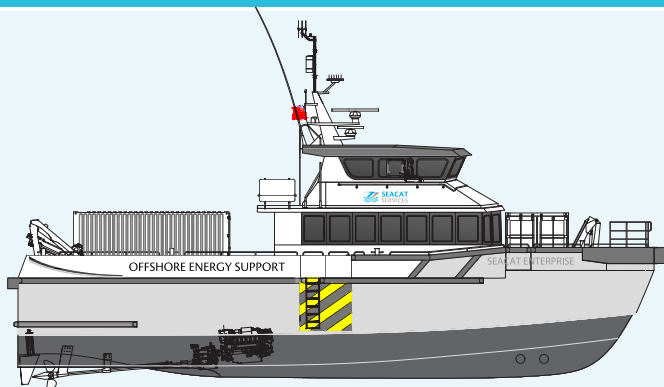




## 27M BV CLASS OESV SPECIFICATION



### GENERAL

**Builder:** South Boats Isle of Wight Ltd

**Design:** South Catamaran 27m High Speed Utility Vessel (HSUV)

**Capacity:** 24 Industrial Personnel, 3 crew

**Construction:** Aluminium

**Length Overall:** 26.9m

**Max Beam:** 9.4m

**Draft:** 2.04m

**GRT:** 123.6 tonnes

**Certification:** 1 HULL MACH Wind farms service ship High Speed Craft; sea area 3. CAT 1, HS-OSC

## STATISTICS

FUEL:	37,000 litres
FRESH WATER:	1,500 litres
WASTE WATER:	1,500 litres
LIGHTSHIP SPRINT SPEED:	25 knots
HALF LOADED SERVICE SPEED:	22 knots
FULLY LOADED SERVICE SPEED:	19 knots
CARGO:	30 tonnes total, up to 10 Tonnes Fwd, up to 30 Tonnes Aft
FWD DECK:	34m <sup>2</sup>
AFT DECK:	80m <sup>2</sup>

## DECK EQUIPMENT

Fuel transfer system, pressure washer, Fore deck - TMP 500L Crane, 1 x 20ft ISO container mounts, dynamic fender system. Aft deck - Effer 275M Crane, 3 x 20ft or 4 x 10ft with ISO container mounts, full beam aft fender.

## WELFARE

Modular interior – configurable to client requirements, including crash tested suspension seats with 4 point seat belts. 3 crew cabins with ensuite, drying room, technician's head with toilet, urinal and sink. Galley and crew mess area with hot water boiler, coffee machine, microwave, oven, hob, fridge and freezer. Air conditioning and heating. Washing machine and tumble dryer. Soft mounted superstructure to minimize noise and vibration.

## ENTERTAINMENT

3 x TVs, Playstation 4, DVD, Radio, MP3, satellite TV, 4G Internet, VSAT.

## MAIN ENGINES

MAKE:	MTU
MODEL:	2 x 12V 2000 M72
MAX POWER:	2160 kw (2900hp)
MAX RPM:	2250

## GEARBOXES

MAKE:	Servogear
MODEL:	HD295 3.3:1

## PROPELLERS

MAKE:	Servogear
MODEL:	1175mm Ecoflow Propulsor

## BOW THRUSTERS

MAKE:	Hercules
MODEL:	4 x HHBT45
MAX POWER:	4 x 45hp

## GENERATOR

MAKE:	2 x Onan
MODEL:	MDKBR
OUTPUT:	19.5 kw

## ELECTRONIC EQUIPMENT

CONTROL SYSTEM:	Scana Mar-El Triton CPP-22 plus Scana Mar-El Triton Sg22/xSFU back-up
MAIN RADAR:	Fururo 2117BB-6.5-24v Radar System 6ft 12Kw Open Array
SECOND RADAR:	Furuno FAR 3210 Chart/Radar System 4ft 12Kw Open Array
ECDIS	Furuno ECDIS FMD3100
DISPLAYS:	1 x 24" & 4 x 19" Screen (2 x Touch Screen)
NAVTEX:	Furuno NX700b Navtex
GPS:	Furuno GP170 GPS
ANEMOMETER:	Furuno RD33 c/w Airmar Ultrasonic Wind Speed
SPEED LOG:	Walker 7070 Electromagnetic Speed Log
DSC VHF:	2 x Sailor RT6222 Class A DCS VHF
MF/HF A2:	Sailor RT6310 MF/HF SSB Radio Telephone
AIS:	Furuno FA170 Class A AIS Transceiver
HEADING:	Furuno SC50 Satellite Compass
BROADBAND:	Wifi
SATCOM B/BAND:	Intellian V60 Vsat system
SATELLITE TV :	Intellian I6P system
HAILER:	Phontech 3110 System, with 10 stations
SAR EQUIPMENT:	Seamarsall SAR Finder 2 x Jotron AIS Sart Jotron TRON 60GPS EPIRB 2x Jotron TR20 VHF Hand Held Radios Flir 324XP Thermal Imaging Camera Fibreight MOB Recovery System SB Sling MOB Recovery System
VMMS:	ReyGar BareFLEET monitoring system